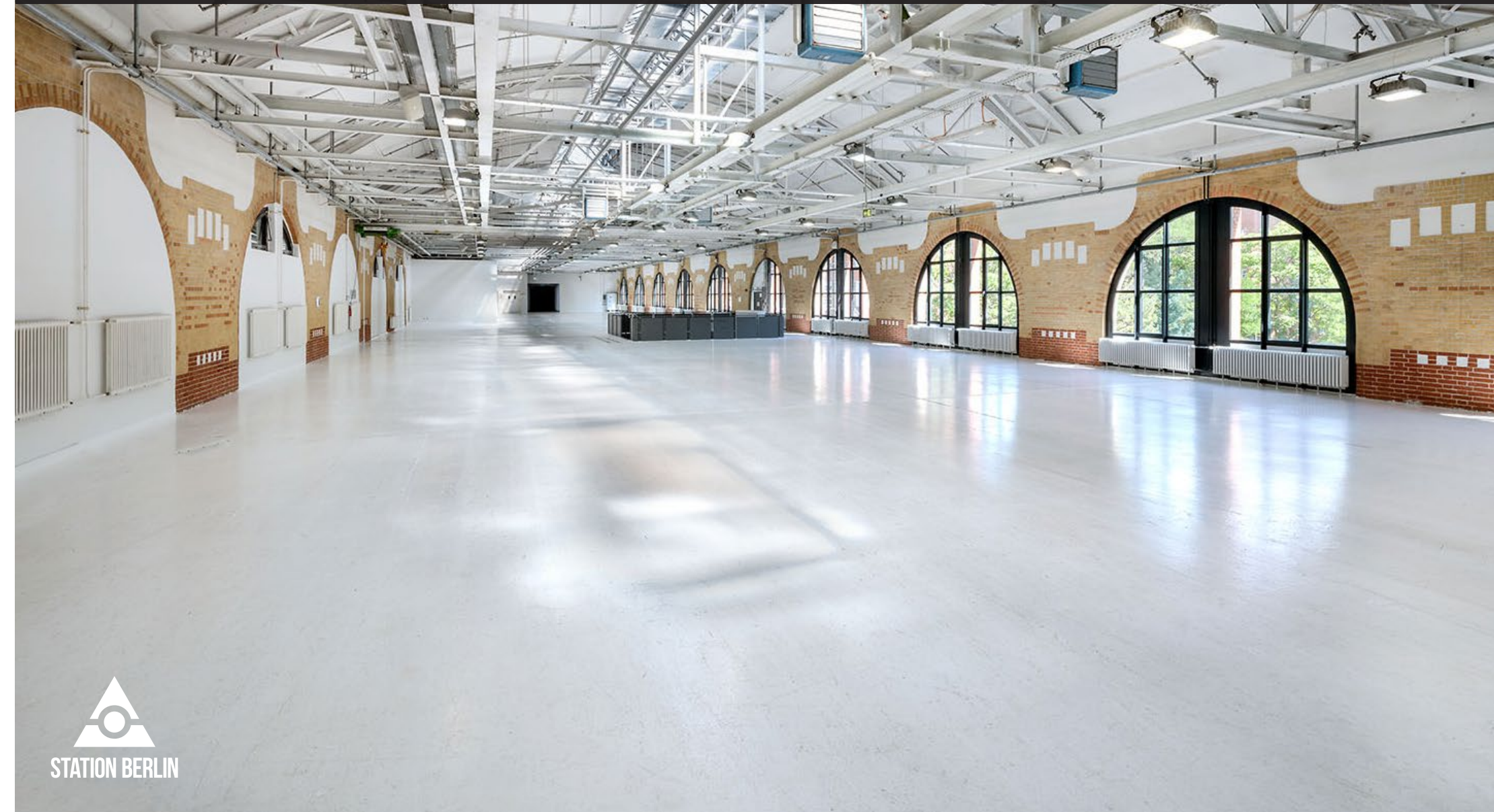


# HALL 5

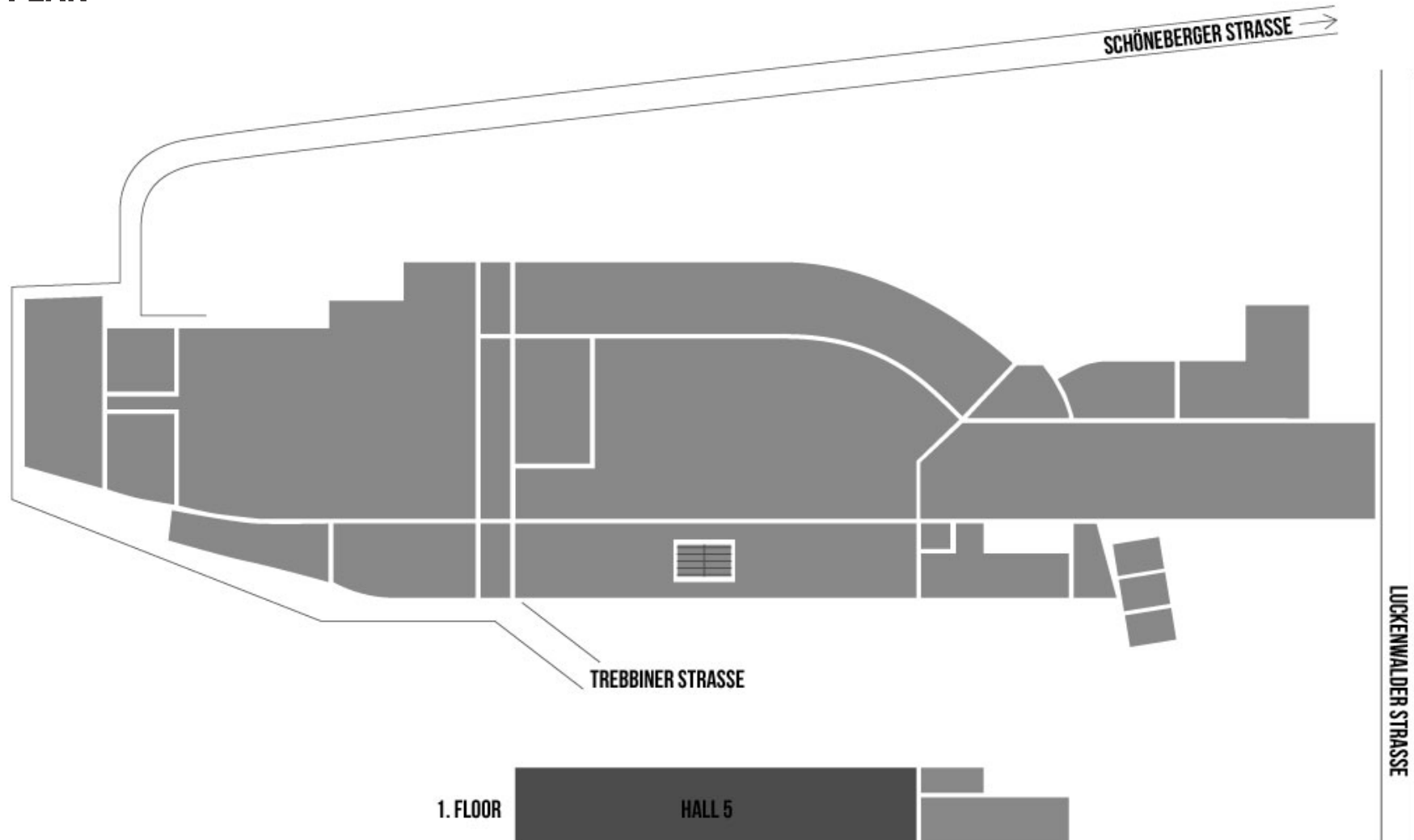
**STATION-BERLIN | EIGHT HALLS. 23,000 SQUARE METRES OF SPACE. INFINITE POSSIBILITIES.**



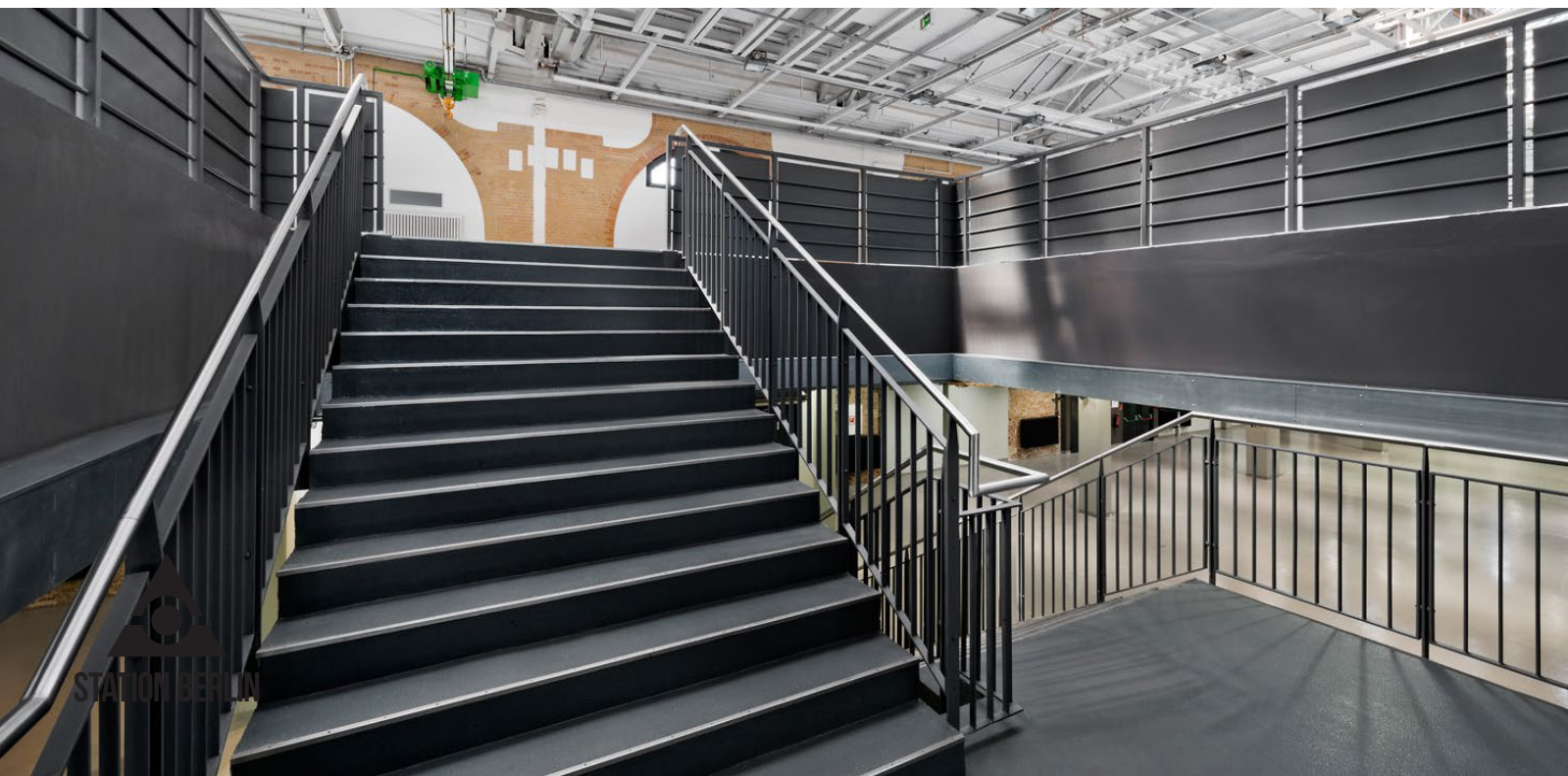
STATION BERLIN

# HALL 5

## GROUND PLAN







# HALL 5

## INFO

With its high vaulted ceilings, Hall 5 conveys a sense of unbridled spaciousness and impresses every visitor who enters for the first time and walks up the broad staircase.

Yellow masonry, white plaster and large window surface areas give it an open and elegant appearance. In addition to the stairs, three freight elevators conduct equipment to the upper floor.





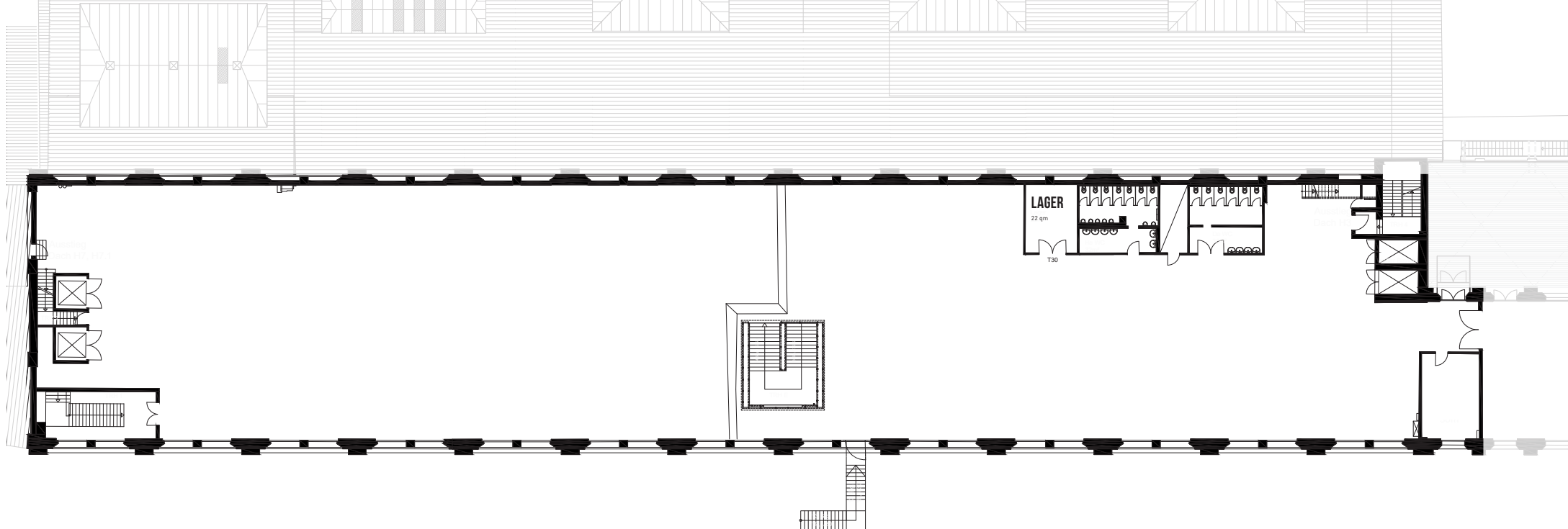
# HALL 5

## USE

The 2,000 square meters of the historically protected hall 5, built of red brick, is ideally suited for events hosting up to 800 individuals.

Indeed, meetings, conventions, product presentations and gala events take place here on a regular basis.





# HALL 5

## INFO

Floor space	2.000 sqm
Dimensions	105 x 20m
Clearance height	11,20m
Lamp height	4,30m
Main beam height	4,40 m
Level	First Floor
Barrier-free access	No
Disabled toilet	No

## SEATING\*

Row	720 Seats
Banquet	800 Seats
Without seating	800 Standing

\*Reference point. The maximum room capacity depends on the specific room concept and has always be considered individually.

## OTHER

Power	Yes
Water	Yes
LAN/WiFi	Yes/Yes
Truck/car access (via ramp)	No/No
Heating/Cooling	Yes/No
Blackout	Optional